

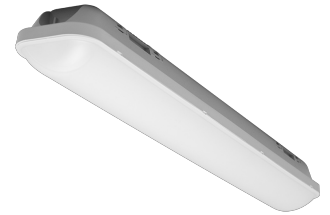
LED luminaire for humid environment, LED DAMPPROOF 1500 48W/4000K IP65

Radium

Product Datasheet Date: 19.11.2019

Logistic Data

Article No.	DAPA1739
Code	LED DAMPPROOF 1500 48W/4000K IP65
Product EAN	4003556005488
Customs tariff no.	94051040
Box quantity (pcs.)	8
EAN Box	4003556405486
Gross weight of box in kg	15.553
Length of box in m	1.53
Width of box in m	0.2
Height of box in m	0.33
ETIM class name	Ceiling-/wall luminaire
Weight	1600 g
Product status	Phase Out



Electric Parameters

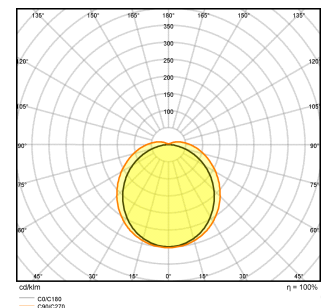
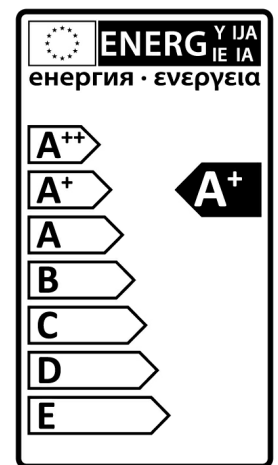
Energy Consumption kWh/1000h	48
Power factor	≥ 0.9
Nominal voltage	220...240 V-240 V
Nominal current (mA)	209 mA
Inrush current	41,2 A
Supply frequency	50 ... 60 Hz

Light Application Parameters

Beam angle	115 °
Luminous efficiency	83 lm/W
Colour of light	White
Colour temperature	4000 K
Colour temperature	4000 K
Colour rendering index CRI	80-89
Colour Stability	≤ 5 sdc _m
Light sharing	Symmetric

Service Life

Lifetime L70B50	30000 h
No. switching cycles	≥ 100000



Specification

Length	1480 mm
Length	1480 mm
Height	72 mm
Width	86 mm
dimmable	No
Impact strength	IK06
Material	PC
Degree of protection (IP)	IP65

Notes on Operation

Max. number of luminaires per B10 circuit braker	38
Max. number of luminaires per B16 circuit braker	61
Max. number of luminaires per C16 circuit braker	61
Permissible storage temperture	-20...+80 °C
Ambient temperatures	-15...45°C
Luminaire with limited surface temperature, sign "D"	No
Filament test according to IEC 60695-2-10	650 °C - 30s

Notes

Robust, classic design for humid or dusty environment. Simple mounting, very homogeneous light with wide beam angle, non-dim.

Please, refer to www.radium.de/recycling for notes on disposal of burned-out lamps as well as lamp breakage. The field 'info about service life' contains the frame conditions according to standards based on which the specific service life has been determined. So, for example, "12B50, 50Hz" means that the mean service life (B50) has been determined with a 12h switching cycle at mains (frequency 50Hz), "3B50, HF" is based on a 3h switching cycle at electronic control gear (high frequency).

Notes

Special features



General notes

The technical design data in accordance with DIN and IEC. The producer does not take any responsibility for damage to persons or property in case of unsuitable operation or handling of the product. Operating data and dimensions are valid within the usual tolerances. Related lamp types (different bases, mains voltages) may be available on request. Sale and delivery are effected in accordance with the Radium Terms of Delivery and Payment valid on the day of conclusion of contract. Packing units offer economical advantages to the purchase and logistic department. Please match your quantity volume accordingly. For orders of a minimum quantity (clefts) with a lamp model the amount lower than the volume of each packaging unit, we will invoice 10 % additional charge per lamp type. Technical changes and terms of delivery are reserved. Manipulation of any kind to packaging or product is not permissible as this will violate Radium brand rights. Furthermore, technical properties of the product can change to its disadvantage or even destruction. Therefore, Radium cannot be responsible for consequential damages.

® = Registered trademark

Subject to change without notice. Errors and omissions excepted.

All technical data without guarantee.