

AGM2E 132 M 6a

IE2

GAMAK

3-Phase 400 V (Δ) 50 Hz

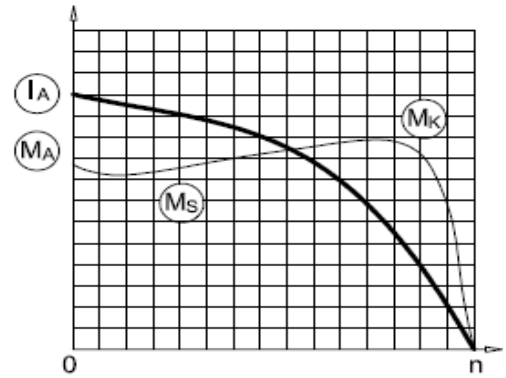
Duty Type : S1

Degree of protection : IP 55 (TEFC)

Insulation class : F (155 °C)

Temp rise : Class B (80K)

Mounting Design : B3



ELECTRICAL DESIGN

Direct On Line

Rated output (kW) : 4

Locked rotor Current – I_a (A) : 45

I_a / I_n : 5.0

Speed (rpm) : 960

Locked rotor Torque – M_a (Nm) : 88

M_a / M_n : 2.2

Rated current (A) : 9

Y / Δ Starting

Torque – M_n (Nm) : 39.8

Locked rotor Current – I_a (A) : 14

I_a / I_n : 1.6

Cos φ : 0.76

Locked rotor Torque – M_a (Nm) : 28

M_a / M_n : 0.7

Efficiency % :

4/4	3/4	1/2
84.6	84.5	81.6

Moment of inertia J (kgm)² : 0.037

Breakdown Torque – M_k (Nm) : 103

M_k / M_n : 2.6

MECHANICAL DESIGN

Frame : Aluminium

End shields : Aluminium

Cooling fan : Plastic

Terminal box : Plastic

Cable gland : Pg 21

No of cable glands : 2

Bearing Arrangement

Standard design

Drive End

6208 ZZ

Non Drive End

6208 ZZ

Reinforced design

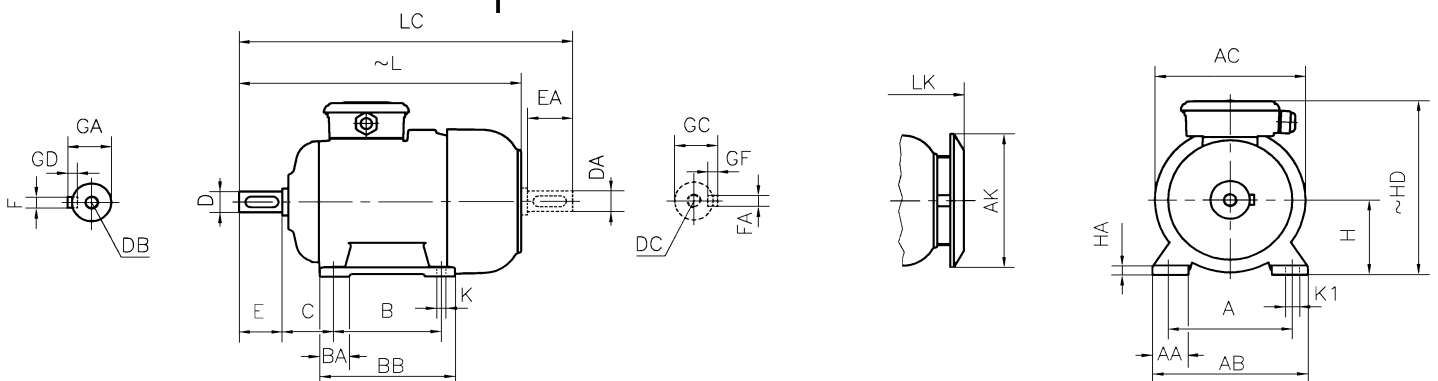
NU 208 E

6028 C3

Noise Level (dB-A) : 61

Paint : RAL 7031- Grey

Approximate weight (kg) : 49



DIMENSIONS

Dimensions of foot mounted motors for mounting arrangement : B3, B6, B7, B8, B15, V5, V6																							
H	HD ~	HA	A	AA	AB	ØAC	ØAK	K	K1	B	B'	BA	BA'	BB	L ~	LC	LK ~	C	E EA	DB DC	ØD ØDA	GA GC	FxGD FAXGF
132	300	15	216	49	260	257	239	12	18	178	-	46	-	218	498	584	535	89	80	M12	38	41	10X8

* Efficiencies are calculated according to indirect method where the additional load losses are determined from exact measurements at different load points.