

# BQ63FB06C0-MB3-

Price

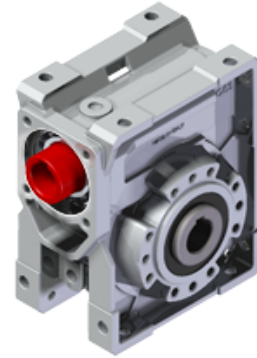
Lead time

## Configuration

Type:	<b>B</b>
Size:	<b>Q63</b>
Input:	<b>Metric</b>
Output shaft/bore:	<b>Standard ø25</b>
Mounting:	<b>FB</b>
Mounting position:	<b>B3</b>
Input bore:	-
Coupling:	-

## Technical data

Input rpm ( $n_1$ ):	<b>n.a. min<sup>-1</sup></b>
Output rpm ( $n_2$ ):	<b>n.a. min<sup>-1</sup></b>
Ratio (i):	<b>30.00</b>
Nominal power ( $P_{1R}$ ):	<b>0.96 kW / 1.56 HP</b>
Nominal torque ( $M_{2R}$ ):	<b>146 Nm / 1230 lb in</b>
Dynamic efficiency (RD):	<b>74%</b>



## Selection

Motor power ( $P_{1M}$ ):	<b>n.a.</b>
Output torque ( $M_{2M}$ ):	<b>n.a.</b>
Service factor (f.s.):	<b>n.a.</b>

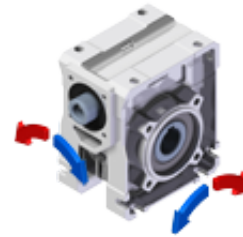
## Lubrication

Oil quantity:	<b>0.30l</b>
AGIP:	<b>Telium VSF 320</b>
SHELL:	<b>Omala S4 WE 320</b>

## On our website

<a href="#">Features</a>	<a href="#">Irreversibility</a>
<a href="#">How to order</a>	<a href="#">Thermal limit</a>
<a href="#">Dimension</a>	<a href="#">Atex certification</a>
<a href="#">Accessories/options</a>	<a href="#">Installation check list</a>
<a href="#">Electric motors</a>	<a href="#">Spare parts list</a>
<a href="#">Selection guide - fs</a>	<a href="#">Complete catalogue</a>
<a href="#">Mounting pos. - lubricant</a>	<a href="#">Selection by power (xls)</a>
<a href="#">Calc. the overhung load</a>	

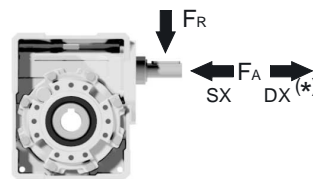
## Direction of rotation



## Note

## Axial and radial loads

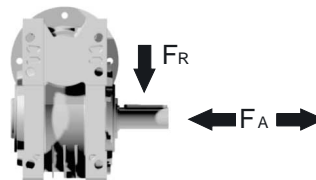
Input shaft



$n_2$ (min <sup>-1</sup> )	FA (N)	FR (N)
<b>1400</b>	90	450

\*Strong axial loads in the DX direction are not allowed

Output shaft



$n_2$ (min <sup>-1</sup> )	FA (N)	FR (N)
<b>200</b>	360	1800
<b>150</b>	400	2000
<b>100</b>	460	2300
<b>75</b>	500	2500
<b>50</b>	600	3000
<b>25</b>	700	3800
<b>15</b>	800	4000

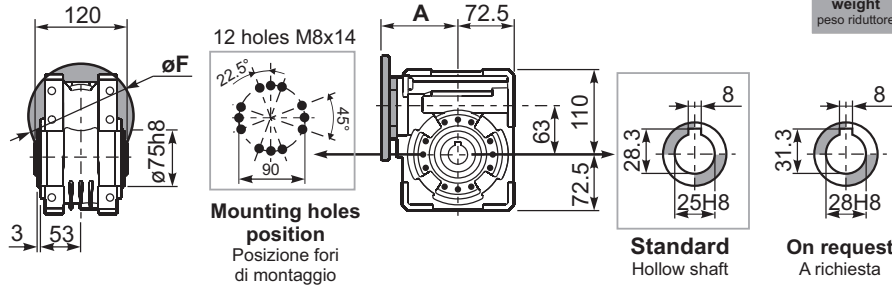
Square - Gear  
147Nm **Q63**

3D dimensions on the Web

PQ63**FB**... Basic wormbox  
Riduttore base

Gearbox weight  
peso riduttore **6.00 kg**

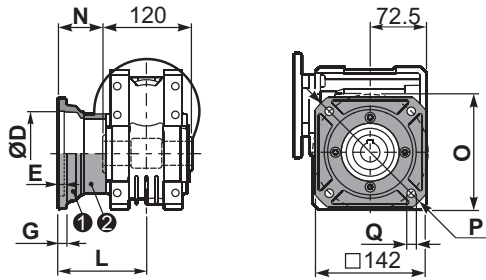
M. flanges	Kit code	øF	A
63B5	K063.4.041	140	99.5
71B5	K063.4.042	160	97.5
80/90B5	K063.4.043	200	99.5
71B14	K063.4.047	105	97.5
80B14	K063.4.046	120	99.5
90B14	K063.4.041	140	99.5



2

PQ63**FC**... Square flange  
Flangia quadrata

PQ63**F1**... Round flange  
Flangia rotonda



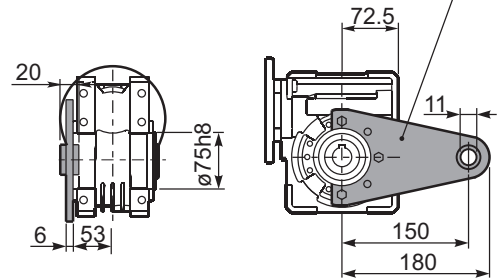
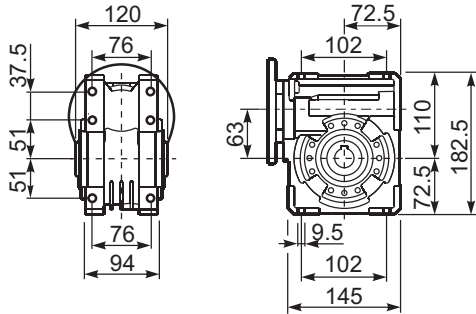
type B	øD	E	G	L	N	O	P	Q	kit code
FC	115 <sup>+0.20</sup> / <sub>+0.15</sub>	6	12	86	26	150	180	11	① KQ63.9.010 ② -
FL	115 <sup>+0.20</sup> / <sub>+0.15</sub>	6	12	116	56	150	180	11	① KQ63.9.010 ② K063.0.200

type S	øD	E	G	L	N	O	P	Q	kit code
F1	130 <sup>+0.20</sup> / <sub>+0.15</sub>	7	13	110	50	165	200	13	① KS070.9.013 ② -
F2	115 <sup>+0.20</sup> / <sub>+0.15</sub>	7	13	124	64	150	175	11	① KS063.9.013 ② -
F3	110 <sup>+0.035</sup> / <sub>0</sub>	5	11	90	30	130	160	10	① KS063.9.011 ② -

PQ63**FB**... Feet  
Piedini

PQ63**BR**... Reaction arm  
Braccio di reazione

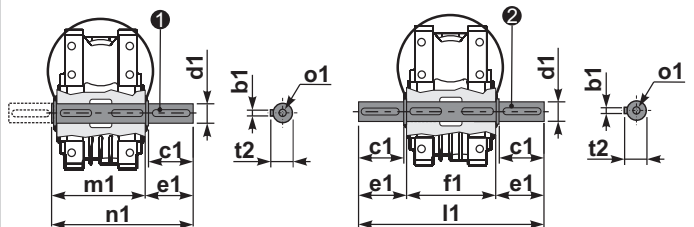
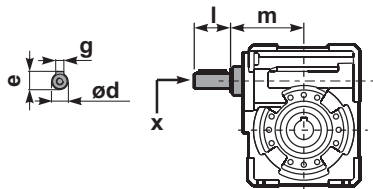
kit cod. K063.9.027



RQ63**FB**... Input shaft  
Albero in entrata

PQ63....**S**... Single Shaft  
Albero lento semplice

PQ63....**D**... Double Shaft  
Albero lento bisp.



① kit cod. K063.5.028 type B

② kit cod. K063.5.029 type B

	ød	e	g	l	m	x	kit code
type B	18 h6	20.5	6	45	93	M6x16	① K063.5.006 PAM80 ② K063.5.007 PAM90
type S	19 h6	21.5	6	40	93	M8x20	① KS063.5.008 PAM80 ② KS063.5.009 PAM90

	b1	c1	d1	e1	f1	l1	m1	n1	t2	o1
type B	8	60	25 <sup>-0.005</sup> / <sub>-0.020</sub>	63.2	120	246.4	126.8	190	28	M8x20
type S	-	-	-	-	-	-	-	-	-	-